








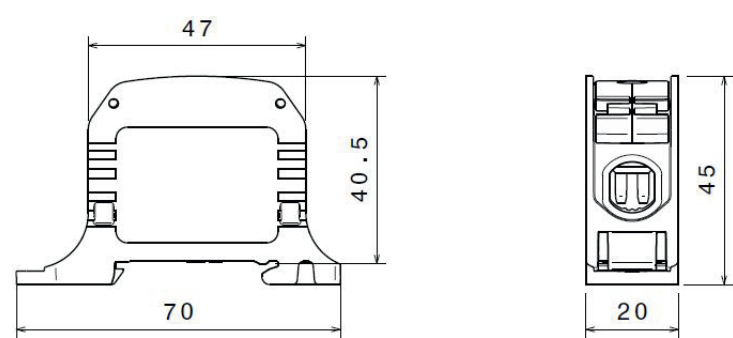
Technical Data Sheet		
Description:	Terminal block RKA 50	
Construction:	Fingersafe IP 20	
Item no. :	087310	11.12.2017

Remarks:	The product is compliant with the EC ROHS directives	
Standards:	IEC 60947-7-1, IEC 61238-1	UL 1059, CSA-C22.2 No. 158
Nominal Voltage:	1.000 V AC / 1.000 V DC	600 V AC
Nominal current:	Cu 150 A, Al 150 A	Cu 150 A, Al 120 A
Rated cross-section:	50 mm ²	AWG 1/0
Impulse withstand voltage:	8 kV	
Pollution degree:	3	
Surge voltage category:	III	
CTI value:	550	550
Terminal cross section:		

	no. of connections: 2 x 50 mm ² (all conductor types)		
	IEC 60947-7-1		IEC 61238-1
	Cu		Al
			
50 mm ²	10 Nm	-	14 Nm
35 mm ²	-	10 Nm	-
25 mm ²	8 Nm	8 Nm	12 Nm
16 mm ²	-	-	10 Nm
10 mm ²	6 Nm	6 Nm	-
6 mm ²	-	-	-
4 mm ²	-	-	-
stripping length	16 mm		
allen screw	M10 (SW 5 mm)		

	no. of connections: 2 x AWG 1/0 (all conductor types)		
	UL 1059, CSA-C22.2 No. 158		
	Cu		Al
			
AWG 1/0	-	-	14 Nm
AWG 2	14 Nm	14 Nm	-
AWG 4			
AWG 6			
AWG 8			
AWG 10	-	-	-
AWG 12	-	-	-
stripping length	16 mm		
allen screw	M10 (SW 5 mm)		

Materials:	Terminal body: Aluminium	tin plated
	Housing: PA 6 (Halogen-free)	
	Screws: Steel	zinc plated
Flame resistance:	Self-extinguishing	
Mechanical data:	Dimensions: width x height x depth (mm):	20 x 45 x 70



Design				
Basic housing colour – light grey RAL 7035				
Part no.	Design	Cover colour	PU	GTIN (EAN)
087310-0-3	L G	light grey RAL 7035	9 / 72	4051589873109
087310-1-3	N	light blue RAL 5012	9 / 72	4051589873116
087310-2-3	PE	yellow-green RAL 6018	9 / 72	4051589873123
087310-3-3	LB	clay brown RAL 8003	9 / 72	4051589873130
087310-4-3	LS	jet black RAL 9005	9 / 72	4051589873147

HORA-Werk GmbH
 Lange Strasse 65, D - 32257 Bünde, Phone: +49 (0) 52 23 / 49 80 - 0
 E-mail: info@hora-werk.com, Internet: www.hora-werk.com